



EN Wi-Fi

PLATFORM UPDATE

October 2021

Trends that will Define **Network Experience**

IoT

Future of Work
is Hybrid



Users and
devices

29B

Networked
devices and
connections
by 2023

- Wireless everywhere
- Remote Collaboration
- Smart buildings

Multi-cloud

Future of Apps
is Distributed



Apps and
Services

70%

of apps deployed
in the cloud will
use containers
by 2023

- Internet is the new core
- Office is where user is
- End to end visibility

Cyber Security

Future of Security
is Borderless



Security and
Compliance

600%

Increase in
attacks to exploit
work from home
users

- User and Apps are everywhere
- Nothing is controlled

AIOps

Future of Operations
is Efficiency



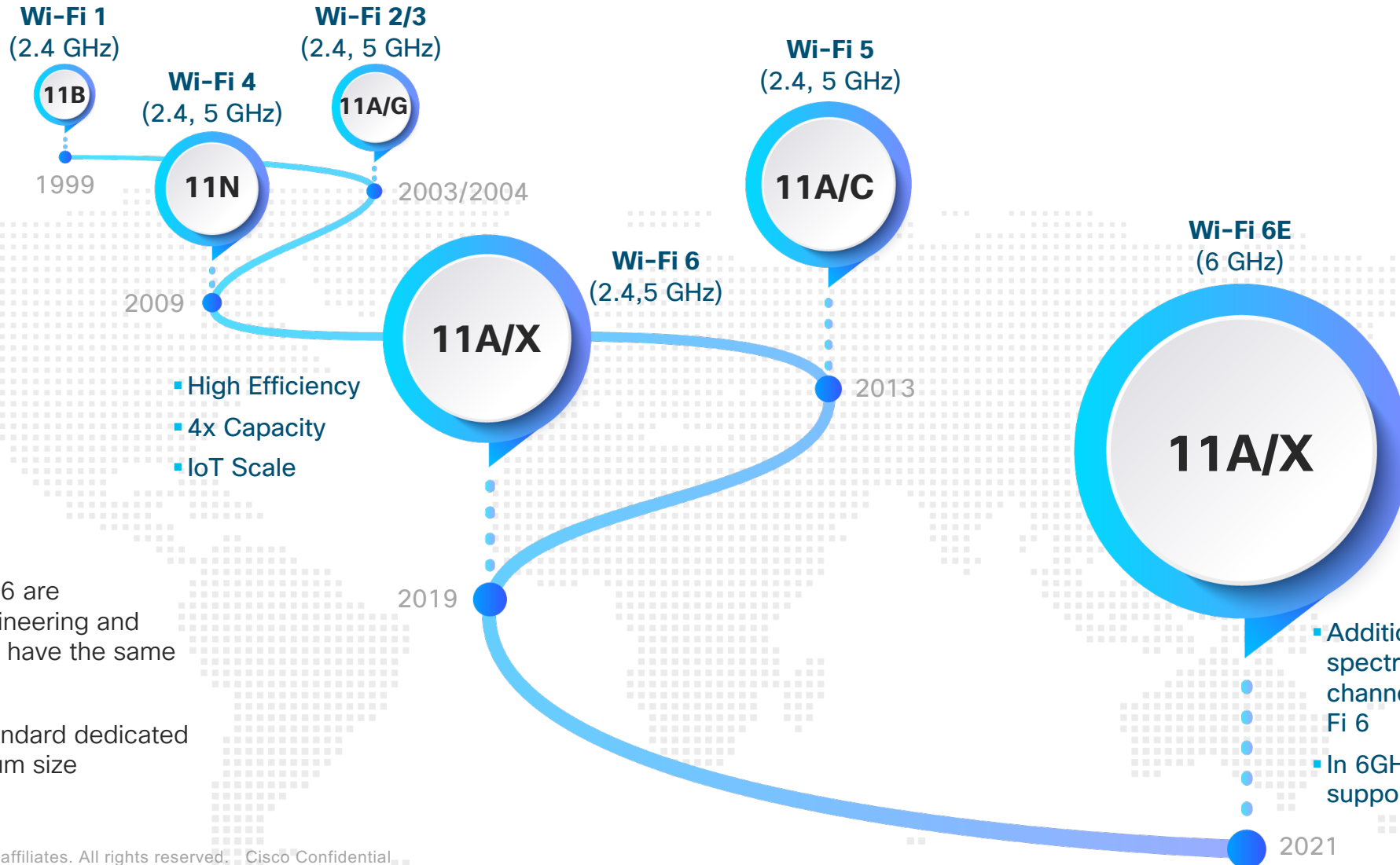
Continuous
Innovations

50%

of large
enterprises will
adopt AIOps
solutions by 2024

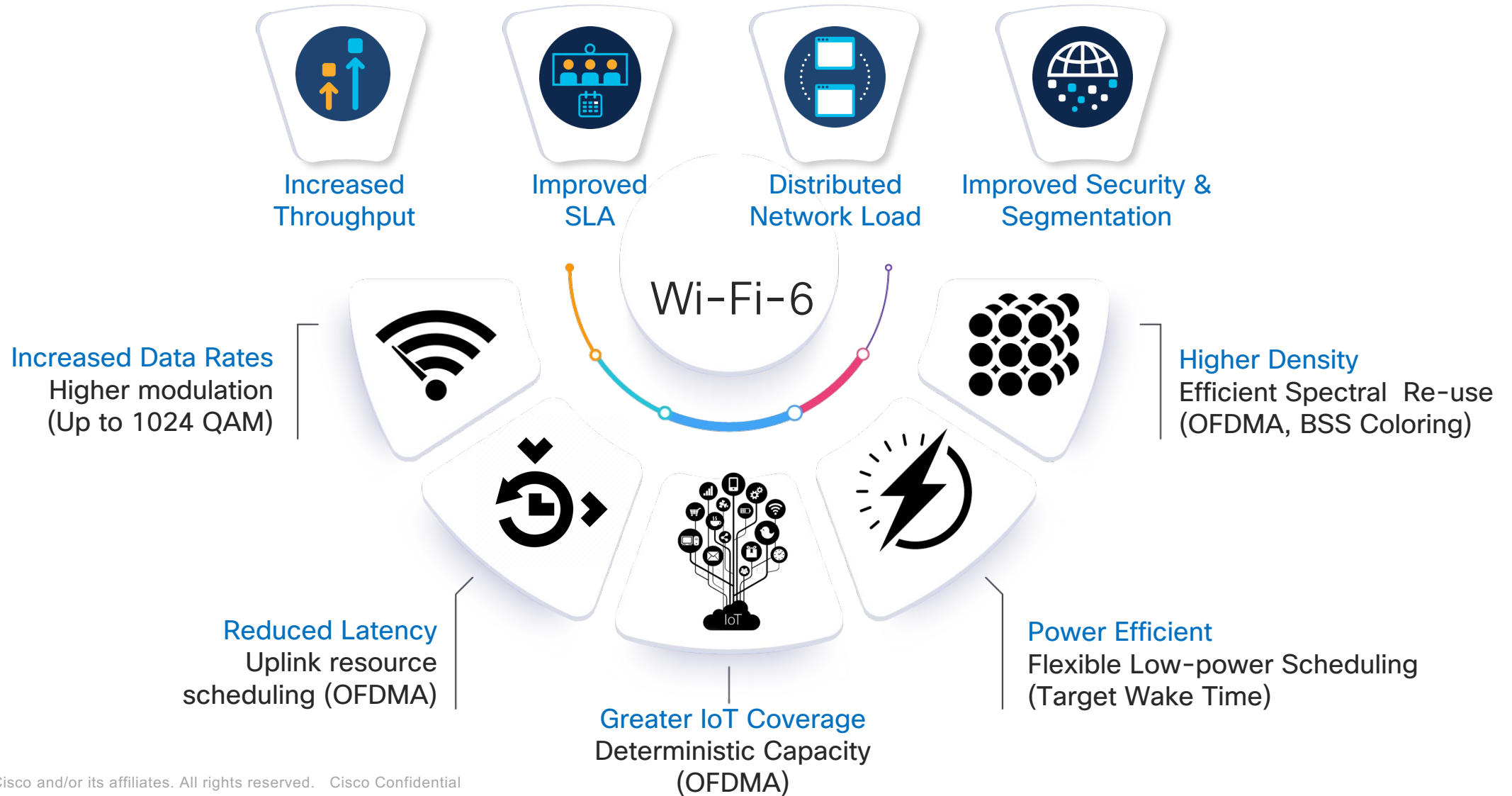
- Big data from network, people and security

What is **Wi-Fi 6E**



- 802.11ax and Wi-Fi 6 are interchangeable engineering and marketing terms that have the same meaning
- Wi-Fi 6E "E" – First standard dedicated to increasing spectrum size

Wi-Fi 6: Enabling New Mobile Experience



Use Cases **Wi-Fi 6E** will Solve

Wi-Fi 6E Means MORE Different Verticals

Education



AR/VR/XR learning, e-learning, digital educations

Healthcare



Telemedicine, robotics, smart IoT devices and wearables, asset tracking

Retail



Self-service/ checkout, digital price tags, smart trace-tracking, AR

Workspaces



Digital collaboration (video conf., digital whiteboards, etc.), teleworking

Manufacturing



Automated and digitized operations and supply chain, cobots

Public Venues



Self-service shopping, smart location-finding/trace-tracking, tracking visitors flow

“IT” needs Support for

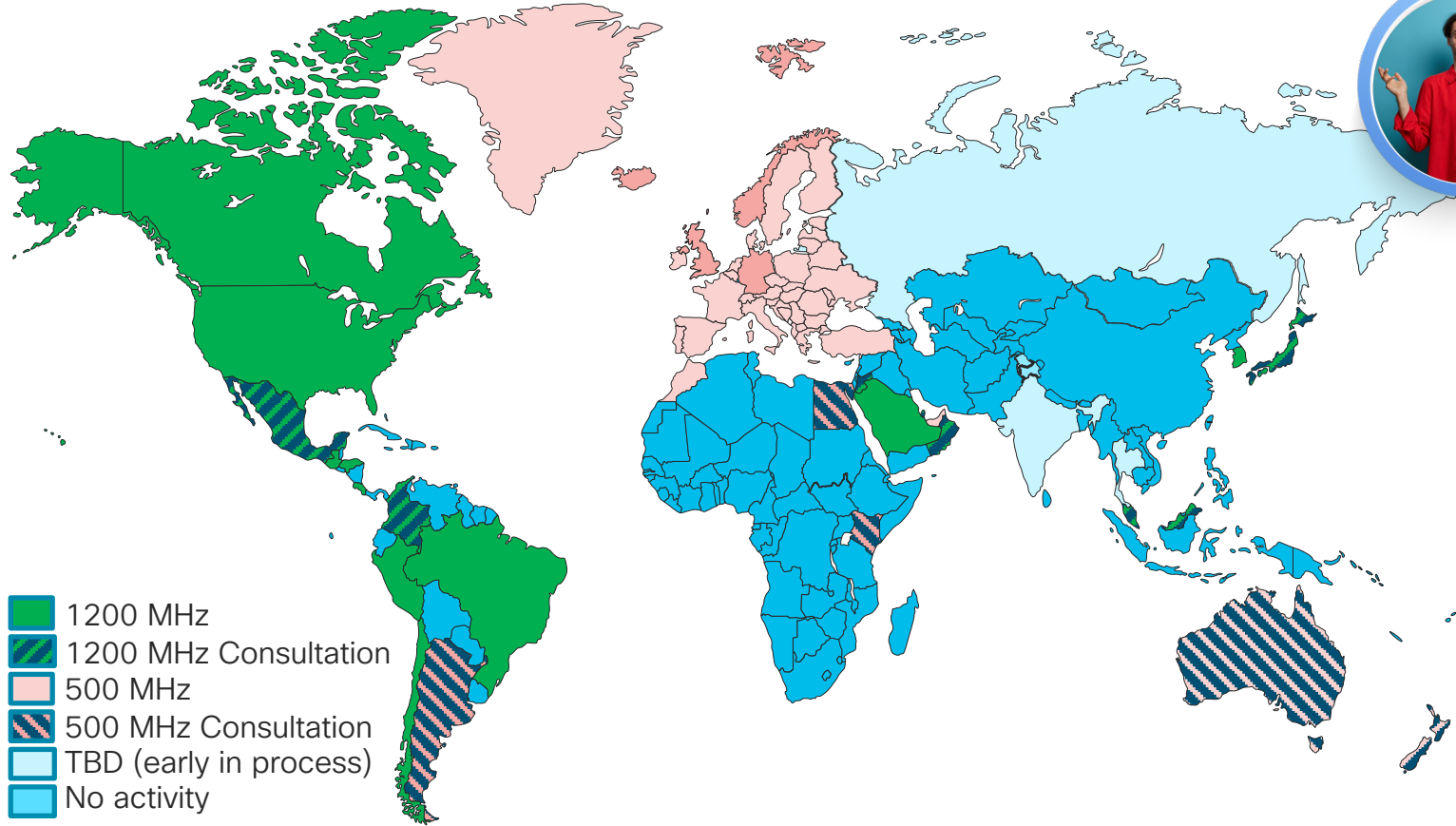
Capacity

Density (IoT devices)

Performance

Low latency

Global Availability of 6 GHz Band for Wi-Fi



- 1200 MHz
- 1200 MHz Consultation
- 500 MHz
- 500 MHz Consultation
- TBD (early in process)
- No activity

(<https://www.wi-fi.org/countries-enabling-wi-fi-6e>)



Is Wi-Fi 6 an Option for me Based on my Geo Specific Location?

Deployment means more than just replacing old APs with new Wi-Fi 6E APs. Ask yourself:

1. Can my network handle the speed? Yes. If your current switches can support a gigabit or more. If no, current Cisco Catalyst switches supports mGig data rates, so you should upgrade.
2. Are there even Wi-Fi 6E client devices available? Yes. But there aren't a lot of client devices on the market yet; a few laptops and Samsung phones and TVs. But more are hitting the market every month. Be ready!
3. Does my country even support Wi-Fi 6E? Maybe. Worldwide support for Wi-Fi 6E isn't here yet and should be available sometime in 2022. But a Wi-Fi 6E AP offers investment protection so you can be ahead of the curve when that technology is approved.

Why is Cisco Leading with **High-end Access Points**?

It's all about putting our best foot forward and leading with our best.

- Early adopters of new network technologies tend to be Enterprise, education and healthcare. They need APs that can handle the traffic on their networks.
- Our competitors feel that being first is important but they're only offering a Wi-Fi 6E solution with 2x2 radios. The Cisco Catalyst 9136 Wi-Fi 6E AP employs an 8x8 radio and two 4x4 radios.
- Legacy clients still need support so an Enterprise network with 2x2 radios is not going to cut it. Despite supporting the new technology, their network capacity is cut in half.
- Furthermore, Wi-Fi 6E Enterprise customers who choose Cisco won't have to replace 2x2 APs on the network when the Enterprise-level APs are released. They're already here! Don't buy the same AP twice.



Redefining the **Hybrid Access Experience** with Catalyst Wireless

CONNECT



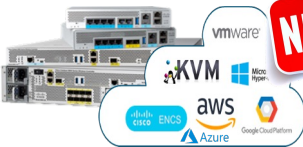
NEW

Best of breed Wi-Fi6 & Wi-Fi 6E* platforms and custom-built long-range UHD solution



NEW

Seamless end-user experience through device ecosystem partnerships



NEW

Multilingual APs with Flexible controller deployment options

SECURE



Policy and Identity-based segmentation with SDA & Best of Breed over the Air security with Rogue and AWIPS



NEW

AI-powered intelligent IOT & device profiling with AI End Point Analytics



NEW

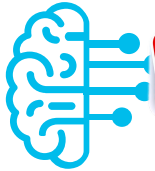
Random Mac Solutions to provide security with out compromising privacy

AUTOMATE



NEW

Immersive NetOps with 3D Map Analyzer



NEW

Smooth Wireless Experience With AI backed predictive and Intelligent RRM



Superior Application experience with App QoS

Catalyst Wi-Fi 6/6E Access Points

Purpose-built for Immersive Experiences

Catalyst® 9105 Series

Most versatile AP for teleworkers, office, branch, dorm room, etc.

Catalyst 9115 Series

Ideal for small to medium-sized deployments with dual radio architecture

Catalyst 9120 Series

Designed for mission-critical deployments with dual 5-GHz and integrated IoT radio

Catalyst 9136 Series

Industry-leading Wi-Fi 6E AP, build to take advantage of 6GHz band expansion with 16 Spatial Streams (4x4+8x8+4x4) tri-band radio architecture and full stack DNA Software.


Catalyst 9130 Series

Industry-leading Wi-Fi 6 AP with 8x8, tri-radio architecture and full iCap. Industry's only 8x8 AP with external antennas, new High gain Ultra High Density with C9104 antenna

Catalyst 9124 Series

Custom designed for delivering best-in-class connectivity in outdoor and challenging environments

 Powered by Cisco RF ASIC

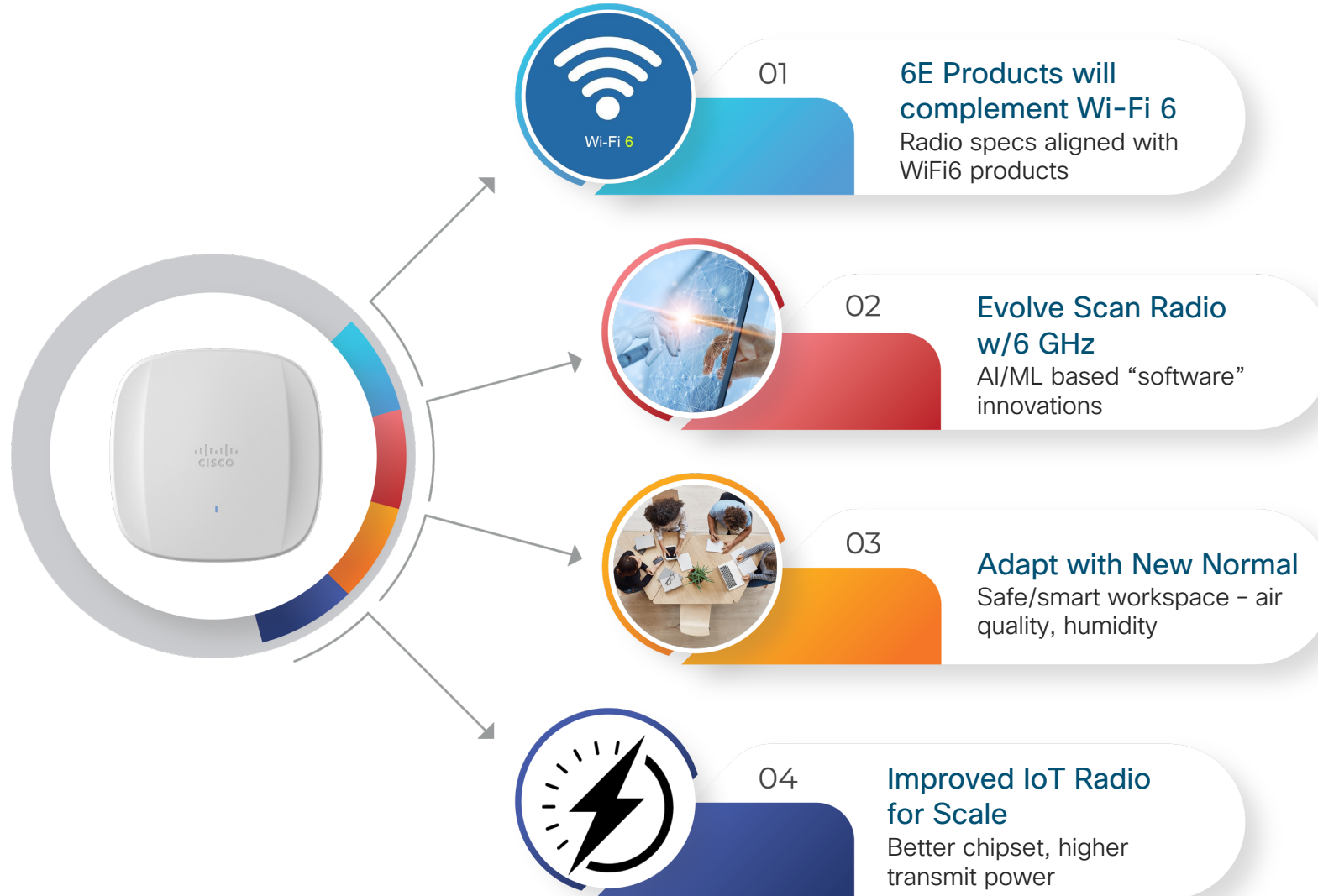
 Powered by Cisco RF ASIC

 Powered by Cisco RF ASIC



Catalyst 9136 Series Access Points

Wi-Fi 6 Extension with Adoption for New Normal



Specifications



Scale and Performance

- 4x4 + 8x8 + 4x4
- Tri Band concurrent
- 10.2 Gbps data rate
- Uplink ports 2x5G



Intelligence for IT/OT

- Software upgradeable scan radio
- Improved IOT radio w/ peaceful co-existence
- Embedded Env sensors (w/ DNA Spaces)



Eco System Innovations

- Client eco system partnership beyond 6E standards
- WPA3, Zero Trust solution
- Full iCAP with decrypted data packet captures
- Client Analytics to enhance Cisco DNA Assurance

Getting Ready for **Wi-Fi 6**

